

**First Light: A Decade of Collecting at the ICA**

ICA, August 17, 2016 - January 16, 2017

Changeover date: October 3-7, 2016

**Barbara Lee Collection**



LOUISE BOURGEOIS

*Untitled, BOUR 0913*

1947-49

Wood and paint

25 1/4 x 10 1/4 x 6 5/8 inches (64.1 x 26 x 16.8 cm)

Gift of Barbara Lee, The Barbara Lee Collection of Art by Women

2015.10



LOUISE BOURGEOIS

*Spiral Woman*

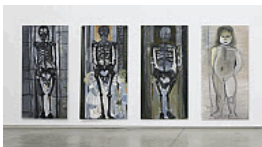
1951-52

Wood and steel

62 1/2 x 12 x 12 inches (158.8 x 30.5 x 30.5 cm)

Gift of Barbara Lee, The Barbara Lee Collection of Art by Women

2015.11



MARLENE DUMAS

*The Messengers*

1992

Oil on canvas

Four parts, each 70 7/8 x 35 1/2 inches (180 x 90.2 cm)

Gift of Barbara Lee, The Barbara Lee Collection of Art by Women

2014.16.1-4



MARISOL

*Couple No. 1*

1965-66

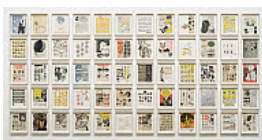
Wood, paint, fabric, and electric motor

71 x 34 x 26 7/16 inches (180.3 x 86.4 x 67.2 cm)

The Barbara Lee Collection of Art by Women

2015.27

[On view first half of exhibition](#)



ELLEN GALLAGHER

*DeLuxe*

2004-05

Photogravure, etching, aquatint, and drypoints with lithography, screenprint, embossing, tattoo-machine engraving, laser cutting, and chine collé; additions of Plasticine, paper collage, enamel, varnish, gouache, pencil, oil, polymer, watercolor, pomade, velvet, glitter, crystals, foil paper, gold leaf, toy eyeballs, and imitation ice cubes

Sixty parts, each 13 1/2 x 10 1/2 inches (34.3 x 26.7 cm)

Overall 84 x 176 inches (213.4 x 447 cm)

Gift of Barbara Lee, The Barbara Lee Collection of Art by Women

2015.24.1-60



MONA HATOUM

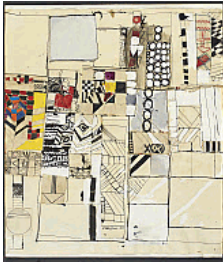
*Pin Rug*

1998-99

Stainless steel pins, canvas, and glue

1 3/8 x 47 13/16 x 73 5/8 inches (3.5 x 121.5 x 187 cm)

Gift of Barbara Lee, The Barbara Lee Collection of Art by Women  
2014.20



EVA HESSE

*Untitled*

1963

Mixed media and collage on paper

22 x 19 5/8 inches (55.9 x 49.8 cm)

Gift of Barbara Lee, The Barbara Lee Collection of Art by Women  
2014.25



EVA HESSE

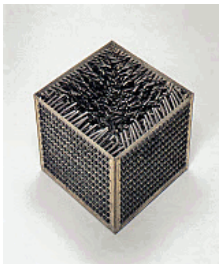
*Ennead*

1966

Acrylic papier-mâché, plastic, plywood, and string

Approximately 96 x 39 x 17 inches (243.8 x 99.1 x 43.2 cm)

Gift of Barbara Lee, The Barbara Lee Collection of Art by Women  
2015.15



EVA HESSE

*Accession IV*

1968

Galvanized steel and rubber

8 1/8 x 8 x 8 1/4 inches (20.6 x 20.3 x 21 cm)

Gift of Barbara Lee, The Barbara Lee Collection of Art by Women  
2015.14



RONI HORN

*Key and Cue, No. 288*

1994-2003

Aluminum and solid cast plastic

51 x 2 x 2 inches (129.5 x 5.1 x 5.1 cm)

Gift of Barbara Lee, The Barbara Lee Collection of Art by Women  
2014.27



YAYOI KUSAMA

*A Flower (No. 14)*

1953

Ink, gouache, and pastel on woven paper

14 7/8 x 10 1/4 inches (37.8 x 26 cm)

Gift of Barbara Lee, The Barbara Lee Collection of Art by Women  
2014.28



LOUISE LAWLER  
*Grieving Mothers (Attachment)*  
 2005  
 Silver dye bleach print (Cibachrome)  
 46 x 41 inches (116.8 x 104.1 cm)  
 Gift of Barbara Lee, The Barbara Lee Collection of Art by Women  
 2015.16



SHERRIE LEVINE  
*Untitled (Gold Knot: 6)*  
 1987  
 Oil on plywood  
 62 1/2 x 50 1/4 inches (158.8 x 127.6 cm)  
 Gift of Barbara Lee, The Barbara Lee Collection of Art by Women  
 2015.19



SHERRIE LEVINE  
*Fountain (Buddha)*  
 1996  
 Bronze  
 12 x 17 x 16 inches (30.5 x 43.2 x 40.6 cm)  
 Gift of Barbara Lee, The Barbara Lee Collection of Art by Women  
 2015.18



ANA MENDIETA  
*Silueta Works in Mexico*  
 1973-77/1991  
 Pigmented inkjet prints  
 Six parts, 20 x 13 1/4 inches (50.8 x 33.7 cm)  
 Gift of Barbara Lee, The Barbara Lee Collection of Art by Women  
 2014.30.1-12



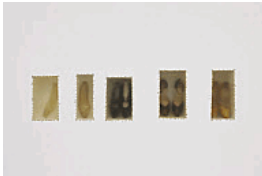
ALICE NEEL  
*Portrait of Vera Beckerhoff*  
 1972  
 Oil on canvas  
 60 x 32 inches (152.4 x 81.3 cm)  
 Gift of Barbara Lee, The Barbara Lee Collection of Art by Women  
 2015.21



CADY NOLAND  
*Objectification Process*  
 1989  
 Metal, plastic, and fabric  
 31 1/8 x 40 1/2 x 17 3/4 inches (79.1 x 102.9 x 45.1 cm)  
 Promised gift of Barbara Lee, The Barbara Lee Collection of Art by Women  
 800.16.02



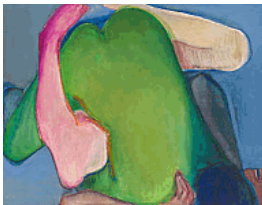
CORNELIA PARKER  
*Hanging Fire (Suspected Arson)*  
 1999  
 Charcoal, wire, pins, and nails  
 144 x 60 x 72 inches (365.8 x 152.4 x 182.9 cm)  
 Gift of Barbara Lee, The Barbara Lee Collection of Art by Women  
 2006.5



DORIS SALCEDO  
*Atrabiliarios*  
 1996  
 Drywall, shoes, cow bladder, and surgical thread  
 47 x 83 1/16 inches (119.4 x 211 cm)  
 Gift of Barbara Lee, The Barbara Lee Collection of Art by Women  
 2014.33



DANA SCHUTZ  
*Sneeze*  
 2002  
 Oil on canvas  
 19 5/8 x 18 3/4 inches (49.8 x 47.6 cm)  
 Gift of Barbara Lee, The Barbara Lee Collection of Art by Women  
 2014.37



JOAN SEMMEL  
*Green Heart*  
 1971  
 Oil on canvas  
 48 x 58 inches (121.9 x 147.3 cm)  
 Gift of Barbara Lee, The Barbara Lee Collection of Art by Women  
 2014.38



CINDY SHERMAN  
*Untitled Film Still #44*  
 1979  
 Gelatin silver print  
 8 x 10 inches (20.3 x 25.4 cm)  
 Gift of Barbara Lee, The Barbara Lee Collection of Art by Women  
 2014.40



CINDY SHERMAN  
*Untitled Film Still #48*  
 1979  
 Gelatin silver print  
 8 x 10 inches (20.3 x 25.4 cm)  
 Gift of Barbara Lee, The Barbara Lee Collection of Art by Women  
 2014.41



CINDY SHERMAN  
*Untitled Film Still #54*

1980  
Gelatin silver print  
8 x 10 inches (20.3 x 25.4 cm)

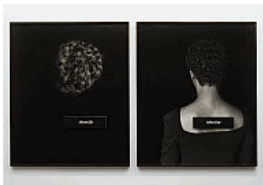
Gift of Barbara Lee, The Barbara Lee Collection of Art by Women  
2014.42



CINDY SHERMAN  
*Untitled Film Still #63*

1980  
Gelatin silver print  
8 x 10 inches (20.3 x 25.4 cm)

Gift of Barbara Lee, The Barbara Lee Collection of Art by Women  
2014.43



LORNA SIMPSON  
*ID*

1990  
Gelatin silver prints and plastic plaques  
Two parts, each 49 x 84 inches (124.5 x 213.4 cm)

Gift of Barbara Lee, The Barbara Lee Collection of Art by Women  
2014.45a-b



KIKI SMITH  
*From Heart to Hand*

1989  
Ink on gampi paper  
31 x 28 x 5 inches (78.7 x 71.1 x 12.7 cm)

Gift of Barbara Lee, The Barbara Lee Collection of Art by Women  
2014.46



NANCY SPERO  
*Birth*

1960  
Watercolor on paper  
17 1/4 x 21 3/4 inches (43.8 x 55.2 cm)

Gift of Barbara Lee, The Barbara Lee Collection of Art by Women  
2014.48



NANCY SPERO  
*Female Bomb*

1966  
Gouache and ink on paper  
34 x 27 1/4 inches (86.4 x 69.2 cm)

Gift of Barbara Lee, The Barbara Lee Collection of Art by Women  
2014.49



KARA WALKER

*The Nigger Huck Finn Pursues Happiness Beyond the Narrow Constraints of Your Overdetermined Thesis on Freedom - Drawn and Quartered by Mister Kara Walkerberry, with Condolences to the Authors*

2010

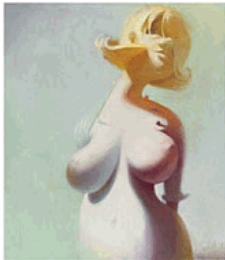
Cut paper and paint on wall; gouache and ink on paper

Approximately 48 feet (1463.4 cm)

Sixteen cut paper elements, dimensions variable; seven framed works on paper, each 11 1/2 x 15 inches (29.2 x 38.1 cm)

The Barbara Lee Collection of Art by Women

2015.09



LISA YUSKAVAGE

*Motherfucking Rock*

1996

Oil on linen

42 x 36 inches (106.7 x 91.4 cm)

Gift of Barbara Lee, The Barbara Lee Collection of Art by Women

2014.52

## Black Box 1



PAUL CHAN

*1st Light*

2005

Projected digital animation (color, silent; 14:00 minutes)

Dimensions variable

Gift of Kimberly and James Pallotta

2006.1

## Black Box 2A



SHARON HAYES

*Ricerche: three*

2013

Single-channel HD video (color, sound; 38:00 minutes)

Gift of VIA Art Fund, Inc./Outset Contemporary Art Fund USA, Inc., as part of The International Production Fund

2014.03

## Black Box 2B



RAGNAR KJARTANSSON

*The Man*

2010

Single-channel video (color, sound; 49:00 minutes)

Gift of Graham and Ann Gund to The Institute of Contemporary Art/Boston, Solomon R. Guggenheim Museum, New York, and Gund Gallery at Kenyon College

2013.14



## Interstitial A



JULIAN OPIE

*Suzanne Walking in Leather Skirt*

2006

Continuous computer animation on 46-inch LCD screen

44 x 26 x 4 3/4 inches (111.8 x 66 x 12.1 cm)

Gift of Kate and Chuck Brizius, in honor of Barbara Krakow

2006.15

## Interstitial B



PHILIP-LORCA DICORCIA

*Ralph Smith; 21 years old; Ft. Lauderdale, Florida; \$25*

1990-92

Pigmented inkjet print [chromogenic color print?]

44 x 66 inches (111.8 x 167.6 cm)

Acquired through the generosity of Paul and Catherine Buttenwieser

2007.5

## Lobby (until 10/2/16)



RACHEL PERRY

*Karaoke Wrong Number*

2001-04

Single-channel video (color, sound; 6:52 minutes)

42" plasma screen

Gift of Sheryl Marshall and Howard Salwen

2007.4

## Louis Bourgeois (B)



LOUISE BOURGEOIS

*Untitled*

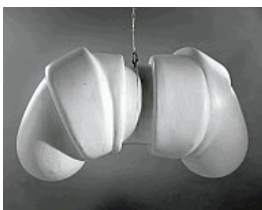
1948

Ink and pencil on paper

11 1/2 x 8 1/2 inches (29.2 x 21.6 cm)

Gift of Barbara Lee, The Barbara Lee Collection of Art by Women

2014.13



LOUISE BOURGEOIS

*Janus*

1968-77

Glazed porcelain

7 x 12 x 6 inches (17.8 x 30.5 x 15.2 cm)

Partial Gift of Joan Sonnabend, in memory of her husband Roger P. Sonnabend. Acquired through the generosity of the Sonesta Charitable Foundation Inc. and the Sonnabend Foundation

2009.2



LOUISE BOURGEOIS

*Janus Fleuri*

1968/1992

Bronze and gold patina

10 1/8 x 12 1/2 x 8 3/8 inches (25.7 x 31.8 x 21.3 cm)

Gift of Barbara Lee, The Barbara Lee Collection of Art by Women  
2014.12



LOUISE BOURGEOIS

*Cell (Hands and Mirror)*

1995

Marble, metal, and mirror

63 x 48 x 45 inches (160 x 121.9 x 114.3 cm)

Gift of Barbara Lee, The Barbara Lee Collection of Art by Women  
2015.13



LOUISE BOURGEOIS

*Arched Figure No. 1*

1997

Fabric, rubber, and steel

9 x 20 x 6 1/2 inches (22.9 x 50.8 x 16.5 cm)

Vitrine: 69 x 22 x 30 inches (175.3 x 55.9 x 76.2 cm)

Gift of Barbara Lee, The Barbara Lee Collection of Art by Women  
2014.10

## Nan Goldin & Rineke Dijkstra (A)



RINEKE DIJKSTRA

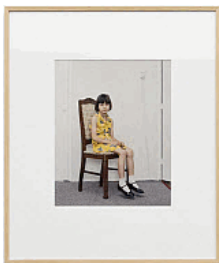
*Almerisa, Asylum Seekers' Center, Leiden, The Netherlands, March 14, 1994*

1994/1999

Chromogenic color print

24 3/8 x 20 1/2 inches (61.9 x 52.1 cm)

Gift of Sandra and Gerald Fineberg  
2012.2



RINEKE DIJKSTRA

*Almerisa, Wormer, The Netherlands, June 23, 1996*

1996

Chromogenic color print

24 3/8 x 20 1/2 inches (61.9 x 52.1 cm)

Gift of Sandra and Gerald Fineberg  
2012.3



RINEKE DIJKSTRA

*Almerisa, Wormer, The Netherlands, February 21, 1998*

1998

Chromogenic color print

24 3/8 x 20 1/2 inches (61.9 x 52.1 cm)

Gift of Sandra and Gerald Fineberg  
2012.4





RINEKE DIJKSTRA  
*Almerisa, Leidschendam, The Netherlands, December 9, 2000*  
 2000  
 Chromogenic color print  
 24 3/8 x 20 1/2 inches (61.9 x 52.1 cm)  
 Gift of Sandra and Gerald Fineberg  
 2012.6



RINEKE DIJKSTRA  
*Almerisa, Leidschendam, The Netherlands, March 19, 2000*  
 2000  
 Chromogenic color print  
 24 3/8 x 20 1/2 inches (61.9 x 52.1 cm)  
 Gift of Sandra and Gerald Fineberg  
 2012.5



RINEKE DIJKSTRA  
*Tiergarten, Berlin, August 13, 2000*  
 2000/2002  
 Chromogenic color print  
 53 5/8 x 42 inches (136.2 x 106.7 cm)  
 Gift of Camilo Alvarez and Alexandra Cherubini, and Steve Corkin and Dan Maddalena  
 2016.07



RINEKE DIJKSTRA  
*Almerisa, Leidschendam, The Netherlands, April 13, 2002*  
 2002  
 Chromogenic color print  
 24 3/8 x 20 1/2 inches (61.9 x 52.1 cm)  
 Gift of Sandra and Gerald Fineberg  
 2012.7



RINEKE DIJKSTRA  
*Almerisa, Leidschendam, The Netherlands, June 25, 2003*  
 2003  
 Chromogenic color print  
 24 3/8 x 20 1/2 inches (61.9 x 52.1 cm)  
 Gift of Sandra and Gerald Fineberg  
 2012.8



RINEKE DIJKSTRA  
*Almerisa, Leidschendam, The Netherlands, March 29, 2005*  
 2005  
 Chromogenic color print  
 24 3/8 x 20 1/2 inches (61.9 x 52.1 cm)  
 Gift of Sandra and Gerald Fineberg  
 2012.9



RINEKE DIJKSTRA

*Almerisa, Zoetermeer, The Netherlands, March 24, 2007*

2007

Chromogenic color print

Image: 13 3/4 x 10 1/4 inches (34.9 x 26 cm)

Framed: 24 x 20 1/16 inches (61 x 51 cm)

Gift of Sandra and Gerald Fineberg

2012.22



RINEKE DIJKSTRA

*Almerisa, Zoetermeer, The Netherlands, January 4, 2008*

2008

Chromogenic color print

Image: 13 3/4 x 10 1/4 inches (34.9 x 26 cm)

Frame: 24 x 20 1/16 inches (61 x 51 cm)

Gift of Sandra and Gerald Fineberg

2012.23



RINEKE DIJKSTRA

*Almerisa, Zoetermeer, The Netherlands, June 19, 2008*

2008

Chromogenic color print

Image: 13 3/4 x 10 1/4 inches (34.9 x 26 cm)

Frame: 24 x 20 1/16 inches (61 x 51 cm)

Gift of Sandra and Gerald Fineberg

2012.24



NAN GOLDIN

*From Here to Maternity*

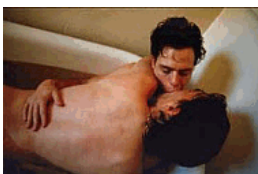
1986 - 2000

Silver dye bleach print (Cibachrome)

60 x 100 inches (152.4 x 254 cm)

Gift of Sandra and Gerald S. Fineberg

2009.1



NAN GOLDIN

*Matt and Lewis in the Tub Kissing, Cambridge*

1988

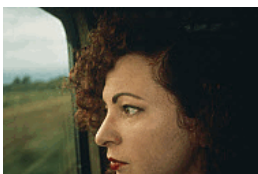
Silver dye bleach print (Cibachrome)

20 x 24 inches (50.8 x 61 cm)

Gift of Barbara Lee, The Barbara Lee Collection of Art by Women

2006.8

Also included in ["The Barbara Lee Collection of Art by Women" chapter](#)



NAN GOLDIN

*Self-Portrait on the Train, Germany*

1992

Silver dye bleach print (Cibachrome)

30 x 40 inches (76.2 x 101.6 cm)

Gift of Beth and Anthony Terrana

2015.01



NAN GOLDIN  
*Noa Dressing for the Venus Show at Shogun Club, Tokyo*  
 1994  
 Silver dye bleach print (Cibachrome)  
 20 x 24 inches (50.8 x 61 cm)  
 Gift of Joan Sonnabend  
 2009.3



NAN GOLDIN  
*Takaho After Kissing, Tokyo*  
 1994  
 Silver dye bleach print (Cibachrome)  
 20 x 24 inches (50.8 x 61 cm)  
 Gift of Judy Ann Goldman  
 2010.2



NAN GOLDIN  
*Tomoyuki in Front of T.V., Tokyo*  
 1994  
 Silver dye bleach print (Cibachrome)  
 20 x 24 inches (50.8 x 61 cm)  
 Gift of Joan Sonnabend  
 2009.4



NAN GOLDIN  
*Bruce in the Smoke, Pozzuoli, Italy*  
 1995  
 Silver dye bleach print (Cibachrome)  
 30 x 40 inches (76.2 x 101.6 cm)  
 Gift of Beth and Anthony Terrana  
 2015.02

## Question Your Teaspoons (A)



LATOYA RUBY FRAZIER  
*Huxtables, Mom, and Me, from The Notion of Family series*  
 2008  
 Gelatin silver print  
 16 x 20 inches (40.6 x 50.8 cm)  
 Anonymous promised gift  
 800.16.05



LATOYA RUBY FRAZIER  
*Mom Making an Image of Me, from The Notion of Family series*  
 2008  
 Gelatin silver print  
 16 x 20 inches (40.6 x 50.8 cm)  
 Anonymous promised gift  
 800.16.04



LATOYA RUBY FRAZIER  
*Momme Portrait Series (Floral Comforter)*, from *The Notion of Family series*

2008  
 Gelatin silver print  
 16 x 20 inches (40.6 x 50.8 cm)  
 Anonymous promised gift  
 800.16.03



NAN GOLDIN  
*Lil Laughing, Swampscott, MA*  
 1996  
 Silver dye bleach print (Cibachrome)  
 11 x 14 inches (27.9 x 35.6 cm)  
 Gift of Lillian and Hyman Goldin  
 2006.12



MONA HATOUM  
*T42*  
 1993-98  
 Fine stoneware  
 2 3/16 x 9 5/8 x 5 1/2 inches (5.5 x 24.5 x 14 cm)  
 Gift of Barbara Lee, The Barbara Lee Collection of Art by Women  
 2014.23



MONA HATOUM  
*Natura Morta (Edwardian Vitrine)*  
 2010  
 Murano glass and wooden cabinet  
 54 1/2 x 24 x 11 13/16 inches (138.5 x 61 x 30 cm)  
 Gift of Barbara Lee, The Barbara Lee Collection of Art by Women  
 2014.19



CHANTAL JOFFE  
*Self-Portrait with Esme*  
 2009  
 Oil on linen  
 80 x 60 inches (203.2 x 152.4 cm)  
 Gift of Adam Sheffer, in honor of Betsy Livingston Sheffer  
 2015.08



SHERRIE LEVINE  
*Chair Seat: 7*  
 1986  
 Casein on wood  
 18 x 18 x 2 1/4 inches (45.7 x 45.7 x 5.7 cm)  
 Gift of Barbara Lee, The Barbara Lee Collection of Art by Women  
 2015.17



KERRY JAMES MARSHALL

*Untitled*

1998

Ceramic

5 parts, each (diameter): 12 1/4 inches (31.1 cm)

Gift of The Dale A. Roberts Collection

2011.1



ABELARDO MORELL

*Camera Obscura: Houses Across The Street in Our Bedroom, Quincy, Massachusetts*

1991

Archival pigment print

20 x 24 inches (50.8 x 61 cm)

Gift of Les and Sandy Nanberg

2016.10



MARK MORRISROE

*"Nymph-O-Maniac" Promo Still Spectacular Studios*

1984

Chromogenic color print

11 3/4 x 17 3/4 inches (29.8 x 45.1 cm)

Promised gift of Mario Russo

800.16.06



NICHOLAS NIXON

*George Gannett, from the People with AIDS series*

c. 1994

Gelatin silver prints

Five parts, each 7 x 7 inches (17.8 x 17.8 cm)

Framed: 14 x 14 inches (35.6 x 35.6 cm)

Gift of Sandra and Gerald Fineberg

2013.09.1-5



DORIS SALCEDO

*Untitled*

1998

Wood, concrete, and metal

72 x 62 x 21 inches (182.9 x 157.5 x 53.3 cm)

Gift of Barbara Lee, The Barbara Lee Collection of Art by Women

2014.34



CINDY SHERMAN

*Untitled Film Still #3*

1977

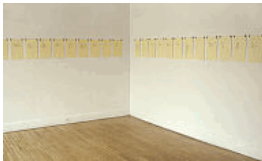
Gelatin silver print

30 x 40 inches (76.2 x 101.6 cm)

Promised gift of Marlene and David Persky

800.09.23





KELLY SHERMAN

*Wish Lists*

2006

Inkjet prints

Four parts, each 14 × 8 1/2 inches (35.6 × 21.6 cm)

Gift of James and Audrey Foster

2007.3



DIANE SIMPSON

*Vest (Scalloped)*

2010

Copper, linoleum, steel, wood, and enamel

55 5/8 × 21 5/8 × 14 inches (141.3 × 54.9 × 35.6 cm)

Acquired through the generosity of Fotene Demoulas, in honor of Dan Byers

2016.08



MICKALENE THOMAS

*Monet's Salon*

2012

Rhinestones, acrylic, oil, and enamel on wood panel

84 × 108 inches (213.4 × 274.3 cm)

Promised gift of Fotene Demoulas and Tom Côté

800.12.4



SHELLBURNE THURBER

*Aunt Anna's House—Stripped: The Pink Study*

1989

Chromogenic color print

33 × 41 inches (83.8 × 104.1 cm)

Gift of Barbara Lee, The Barbara Lee Collection of Art by Women

2014.50



ANDY WARHOL

*Red Book Prefix F158*

1972

Dye diffusion transfer prints (Polaroid)

1/2 × 5 1/4 × 3 1/2 inches (1.3 × 13.3 × 8.9 cm)

Gift of The Andy Warhol Foundation for the Visual Arts, Inc.

2014.01.1-21

**\*\*ALSO INCLUDED CAROL BOVE'S *INNERSPACE BULLSHIT* (SEE FREEDOM OF INFO)**

## Soft Power



KAI ALTHOFF

*Untitled*

2004

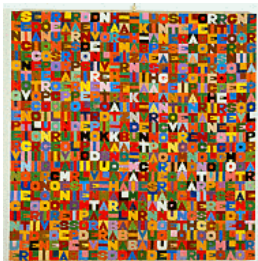
Gloss paint on fabric

33 1/2 × 35 1/2 × 3/4 inches (85.1 × 90.2 × 1.9 cm)

Fractional and promised gift of Nancy W. Adams and The Nicholas C. Adams Family

800.05.3





ALIGHIERO E BOETTI

*Oggi il settimo giorno del settimo mese dell'anno mille nove 100 ottantotto per Giampaolo Prearo editore (Today on the seventh day of the seventh month of the year one thousand nine 100 Eighty-eight Giampaolo Prearo editor)*

1988

Embroidery on cotton

42 1/2 x 42 7/8 inches (108 x 109 cm)

Promised gift of Tristin and Martin Mannion

800.16.14



NICK CAVE

*Soundsuit*

2009

Mixed media

97 x 26 x 20 inches (246.4 x 66 x 50.8 cm)

Promised gift of Steve Corkin and Dan Maddalena

2016.32



ALEXANDRE DA CUNHA

*BUST XXXV*

2012

Mop, string, and concrete

48 3/4 x 8 x 7 7/8 inches (123.82 x 20 x 20 cm)

Gift of Fotene Demoulas and Tom Coté

2016.12



JOSH FAUGHT

*Untitled*

2009

Hemp, sequins, pin, and wooden garden trellis

48 x 50 x 2 inches (121.9 x 127 x 5.1 cm)

Gift of Andrew Black

2014.02



FRANÇOISE GROSSEN

*Inchworm*

1971

Industrial cotton piping cord

Approximately 2 x 20 x 13 feet (61 x 609.8 x 396.3 cm)

Gift of the artist, in honor of Jenelle Porter

2015.05



CHARLES LEDRAY

*Untitled*

1992

Fabric, thread, and clothing

Approximately 24 x 96 inches (61 x 243.8 cm)

Gift of Alvin and Barbara Krakow

2011.3



ROBERT ROHM

*Untitled*

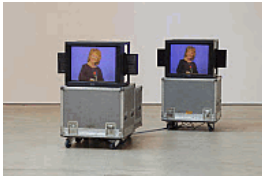
1970

Instructions on paper and stained 1/2-inch manila rope  
Approximately 6 x 15 feet (182.9 x 457.3 cm)

Gift of Candy Adriance

2015.29

## The Freedom of Information (B)



DARA BIRNBAUM

*Kiss the Girls: Make Them Cry*

1979

Two channel video (color, sound; 6:26 minutes) and flight cases

The Barbara Lee Collection of Art by Women

2015.33



CAROL BOVE

*Innerspace Bullshit*

2007

Fourteen books, comic book, letter, bronze sculpture, Marfa rock, ocean ephemera, mirror and pamphlet on wood and metal shelves  
42 x 36 1/8 x 12 inches (106.7 x 91.8 x 30.5 cm)

The Barbara Lee Collection of Art by Women

2015.26



ANNE COLLIER

*Open Book #3 (Island Wilderness), from the Open Book series*

2010

Chromogenic color print

47 1/4 x 62 1/8 inches (120 x 157.8 cm)

Gift of Fotene Demoulas and Tom Coté

2016.11



SHEPARD FAIREY

*Marilyn Warhol*

2000

Screenprint

24 x 18 inches (61 x 45.7 cm)

Acquired through the generosity of Beth and Anthony Terrana, Sandra and Gerald S. Fineberg, Fotene Demoulas, and the artist

2009.11



GILBERT & GEORGE

*Sky Blue World, from the 25 Worlds series*

1989

Postcards mounted on board

95 x 69 inches (241.3 x 175.3 cm)

Gift of Sandra and Gerald Fineberg

2013.07



LESLIE HEWITT  
*Riffs on Real Time (3 of 10), from the Riffs on Real Time series*  
 2008  
 Chromogenic color print  
 40 x 30 inches (101.6 x 76.2 cm)  
 Promised gift of Anthony Terrana  
 800.16.09



LOUISE LAWLER  
*Untitled*  
 1988  
 Silver dye bleach print (Cibachrome) and text  
 26 1/2 x 32 3/4 inches (67.3 x 83.2 cm)  
 Gift of Barbara Lee, The Barbara Lee Collection of Art by Women  
 2014.29



SHERRIE LEVINE  
*After Henri Matisse*  
 1985  
 Ink and graphite on paper  
 13 7/8 x 10 7/8 inches (35.2 x 27.6 cm)  
 Gift of Barbara Lee, The Barbara Lee Collection of Art by Women  
 2015.20



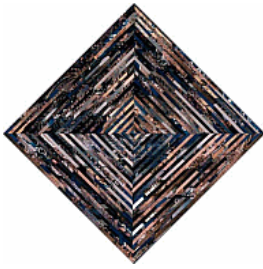
KLARA LIDÉN  
*Untitled (Poster Painting)*  
 2010  
 Found posters, poster paper, and wheat paste  
 33 1/2 x 25 5/8 x 2 inches (85.1 x 65 x 5.1 cm)  
 Promised gift of James and Audrey Foster, in honor of the ICA's 75th Anniversary  
 800.12.02



CADY NOLAND  
*Untitled*  
 1989  
 Screenprint on aluminum  
 72 x 48 inches (182.9 x 121.9 cm)  
 Gift of Barbara Lee, The Barbara Lee Collection of Art by Women  
 2015.23



THOMAS RUFF (German, born 1958)  
*Zeitungsphotos*  
 1991  
 Lithographs  
 Twelve parts, each: 20 x 16 inches (50.8 x 40.6 cm)  
 Gift of Sandra and Gerald Fineberg  
 2012.13



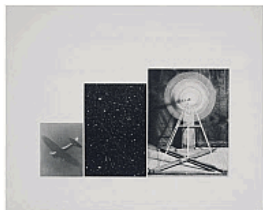
SARA VANDERBEEK  
*Continuum Blue*  
 2008  
 Chromogenic color print  
 Framed: 30 1/2 x 30 1/2 x 2 inches (77.5 x 77.5 x 5.1 cm)  
 Gift of Dr. Dana Beth Ardi  
 2016.06



CHARLINE VON HEYL  
*Untitled*  
 2003  
 Mixed media on paper  
 Ten parts, each 23 7/8 x 18 7/8 in. (60.6 x 47.9 cm)  
 Gift of Barbara Lee, The Barbara Lee Collection of Art by Women  
 2015.25.1-10



ANDY WARHOL  
*Electric Chair*  
 1971  
 Screenprints  
 Two parts, each 35 x 47 inches (88.9 x 119.4 cm)  
 Anonymous gift  
 2015.32.1-10



VIJA CELMINS  
*Concentric Bearings D*  
 1985  
 Three-color mezzotint, aquatint, drypoint, and photogravure  
 18 x 22 3/8 inches (45.7 x 56.8 cm)  
 Promised gift of Anthony Terrana  
 800.16.12

**\*\*ALSO INCLUDED SHERRIE LEVINE'S CHAIR SEAT: 7 (SEE QUESTION YOUR TEASPOONS)**